



CLANTREE  
FROM JAPAN TO THE WORLD



## 幸せに、美しく生きる。

多様化し続けるこれからの世界において、

モノにあふれた時代に、モノが本当に為すべき役割とは何か。

今、改めて日本の暮らしと美意識を見つめ、学び、その根幹にある

精神性と機能性を持ち合わせた日本固有の感覚を呼び覚まし、

今を生きる作り手として現代の生活に応用することで、

人々が幸せに、美しく生きるためのモノづくりを提案していきます。

そのために、私たちは貴重な資源である素材や人材の可能性を追求し、

様々なことに挑戦しながら、仲間を増やし続けていきたいと思います。

## A happy and beautiful life.

What is the role of goods in this diversified and materialistic world?

We propose a manufacturing concept for happiness and beauty by

seeing the Japanese lifestyle and aesthetic sense in a fresh light and

by awakening the unique Japanese sense deep-rooted in our culture

along with product functionality, and applying these to our modern

lifestyle as modern craftsmen. To realize this goal, we pursue

quality materials and talented people; we accumulate experiences;

and we invite more partners.





## STORY

ラオス産のチーク材に、日本が誇る家具づくりの技を注ぎこみ、  
ついに完成した「CLANTREE」の家具、第一弾。  
発表までに約3年。私たちはラオス訪問を重ね、植林地や製材所を訪ね、  
顔の見えるネットワークと、何よりかけがえのない信頼関係を築いてきました。  
次なるステージで思い描くのは、木材の調達だけにとどまらず、  
ラオス現地でも安定的に家具を生産できる仕組みづくりです。  
すでに日本にもラオスの青年たちを招き、家具製作の技術指導に取り組んでいます。  
「CLANTREE」が志すのは、世界の様々な国々でモノづくりの喜びを共有し、  
産業の発展や暮らしの豊かさに貢献できること。  
そのためには、使い手と作り手のどちらも幸せにできる、  
時代に消費されない、本当によいモノづくりを目指さなければなりません。  
大量生産の流れに逆らう、私たちの挑戦。  
世界の仲間たちに出会う「CLANTREE」の旅は、まだ始まったばかりです。

We are honored to introduce you part one of CLANTREE, that is produced with Laos teak and renowned Japanese furniture-making techniques, spending approximately 3 years to complete. Visiting tree farms and lumber factories in Laos again and again, we have developed a strong network and irreplaceable relationship each other. As a next step, we are now planning to build a stable system in which Laotian workers can produce furniture constantly at home. We have launched a project in which we teach furniture-making to young Laotian craftsmen, inviting them to our factory in Saga. Through the CLANTREE project, we are aiming to share the pleasure of producing furniture in various countries and devoting ourselves to industrial development and fulfillment in life. To realize this goal, we commit ourselves to producing genuine products which are not affected by trend and make both creators and users happy. This is our challenge against the mass-production century. Our journey with CLANTREE to meet our future partners all over the world has just started.





## TEAK

チーク材は、世界三大銘木に数えられる高級材のひとつ。

現在では各地で伐採が制限され、輸入も規制されているため、

日本では手に入りにくい希少な素材となっています。

このたび「CLANTREE」が、ラオスの大切な資源であるチーク材を使った家具づくりに携われることは、貴重な巡り合わせです。

チーク材の魅力は、その耐久性と、美しさ。

油分が多く、硬く頑丈であるため、古くは造船木材として使われてきました。

同じ理由から、住居ではフローリングなどにも用いられ、

アジアで歴史のある高級住宅などを訪ねると、

チーク材の床は人々の暮らしの中で年月に磨かれて、

金色とも形容したいような神々しい輝きを放っています。

「CLANTREE」の家具も、10年、20年と、美しさが育まれてゆく家具です。

時を重ねるほどに愛着が増す、一生モノにふさわしいデザインでご提案します。

Teak is defined as one of the three first-class woods in the world. Currently teak wood is known as very precious and rare wood of low availability because its logging and importing is severely restricted in so many countries. CLANTREE is now blessed with a wonderful opportunity, amid such severe procuring situation, to develop various kinds of innovative furniture made of teak from Laos where teak is also one of the precious resources. The beautiful points of teak wood are its great durability and amazing appearance. Long time ago, teak wood was used for building ships, since the wood is very hard, oil-rich and sturdy. At the same time, teak wood has been widely used as flooring materials of houses. If you visit first-class traditional houses in Asian countries, you can find teak-made flooring used there and also refined and refined in the residents' daily lives. Such teak-made flooring gives out gold-like divine shines. All the furniture made by CLANTREE will surely grow their own beauty more and more as you use them for 10, 20 years more. CLANTREE furniture is designed as the life-long product for your long use so that you will love them more and more as long as you live.





## QUALITY

上質な素材と、最先端技術による精度の高さ。

そして、人の手による繊細な仕上げ。

それこそが、「CLANTREE」が世界に誇りたい品質です。

高性能のマシンを駆使するだけでなく、

職人から職人へと受け継がれてきた日本の家具づくりの心を伝え、

「私たちができれば作れない」といえる、ゆるがぬ品質を目指しています。

長く安心して使える造りの確かさはもちろんのこと、

日本の職人が仕上げた家具は、手でふれた時の感触の良さでわかります。

それは、職人たちが何度も手でさわっては磨きをかけて、

木材と対話するように重ねた丹念な手仕事の賜物です。

これらの品質をもって私たちがお届けしたいのは、人生に寄り添える家具。

さらには代々、そのご家庭で使い続けていただけるならば、

作り手にとって、これほど幸せなことはありません。

CLANTREE's quality is composed of 1) high-quality materials, 2) high precision achieved by cutting-edge technology and 3) fine finish by experienced craftsmen. Based on these three factors, CLANTREE takes pride in its world-class quality. "Only We Can Make Them" This is our quality motto : CLANTREE always pursues steady high quality by using high-performance machines on one hand and devoting the craftsmen's traditional spirit, which has been handed down between generations, to furniture-making process on the other hand. Every furniture product refined by Japanese craftsmen shows so a good design that it can be used comfortably for a life-long period. It also feels very nice. This is because the craftsmen touch furniture products and refine their surface so many times until they feel perfect. The craftsmen work on the furniture products so carefully and gently as if they were communicating with the products. Thus they carefully refine the furniture by hand. Through such refined high quality, we would like to provide our customers with life-long furniture. As a major furniture maker, it is our great honor and pleasure that our furniture products serve our users for so many decades.



## THE AURA

思想家の柳宗悦らが起こした民藝運動の中で、  
職人たちの誠実な手仕事による民衆的美術工芸に  
普遍的な美しさを見出すことによって生まれた概念「用の美」。  
私たちは、これは単なる機能美を意味するのではなく、  
本当に使いやすいものを求めて無心に努力を重ねた結果、  
そのかたちに真の「用の美」が宿るものと考えます。

本当の使いやすさと普遍的な美しさを追求して生まれたTHE AURA。  
日々の暮らしに溶け込み、時と共に深まっていく佇まいをご提案します。

“*Yo-no-bi*” is a concept nurtured in the Mingei Movement from the philosopher and critic, Muneyoshi Yanagi. “*Yo-no-Bi*” or “beauty of practicality” means the true beauty found in craftwork for everyday use made by unknown craftspeople. It is more than just functional beauty. We believe “*Yo-no-Bi*” resides in truly easy-to-use products when we devote ourselves to producing them. THE AURA was created by this process. We offer you a perfect blend with your everyday life and an appearance that improves with use.





THE AURA

Table 180 THSN01



THE AURA

TV Stand 180 THMA01



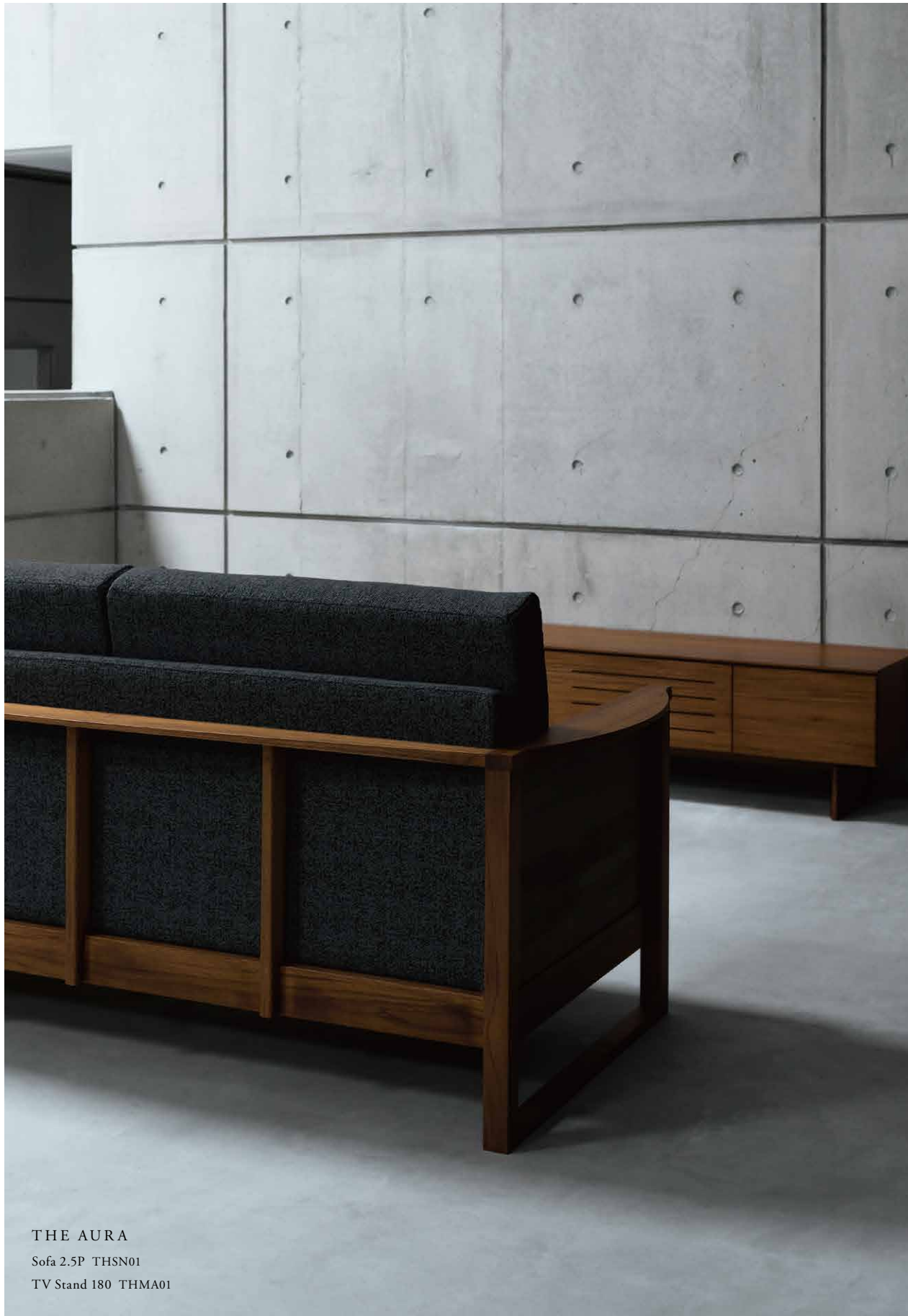


THE AURA  
Arm Chair THSN01  
Chair THSN01



THE AURA  
Side Board 120 THMA01





THE AURA  
Shelf 90 THMA01





THE AURA

Sofa 3P THSN02



THE AURA

Coffee Table 120 THMA01

Sofa 2.5P THSN01

Side Board 120 THMA01





## LANDSCAPE

伝統的な和風建築の設計思想に

「庭屋一如（ていおくいちによ）」という言葉があります。

庭と建物を調和がとれて一体になるように造るという考えで、

そこには四季の中で暮らし、自然との共存を大切にしてきた

日本人ならではの美学があります。

その考え方に着想を得て生み出された LANDSCAPE。

季節を感じながら自然体で過ごす豊かな時間。

美しく、風通しの良い毎日をご提案します。

“*Teioku Ichinyo*”, a traditional Japanese architect policy, brings together the exquisite harmony between the building and the garden. This classic Japanese policy nurtured in the traditional Japanese lifestyle in all seasons co-exists with nature. Inspired by the idea, we created LANDSCAPE. LANDSCAPE offers you a seasonal, relaxing, and fulfilled experience. We deliver aesthetically pleasing, light, airy, and comfortable lifestyles.





LANDSCAPE

Sofa 2P LALE01



LANDSCAPE

Lounge Chair LALE01





LANDSCAPE

Low Board 150 LALE01

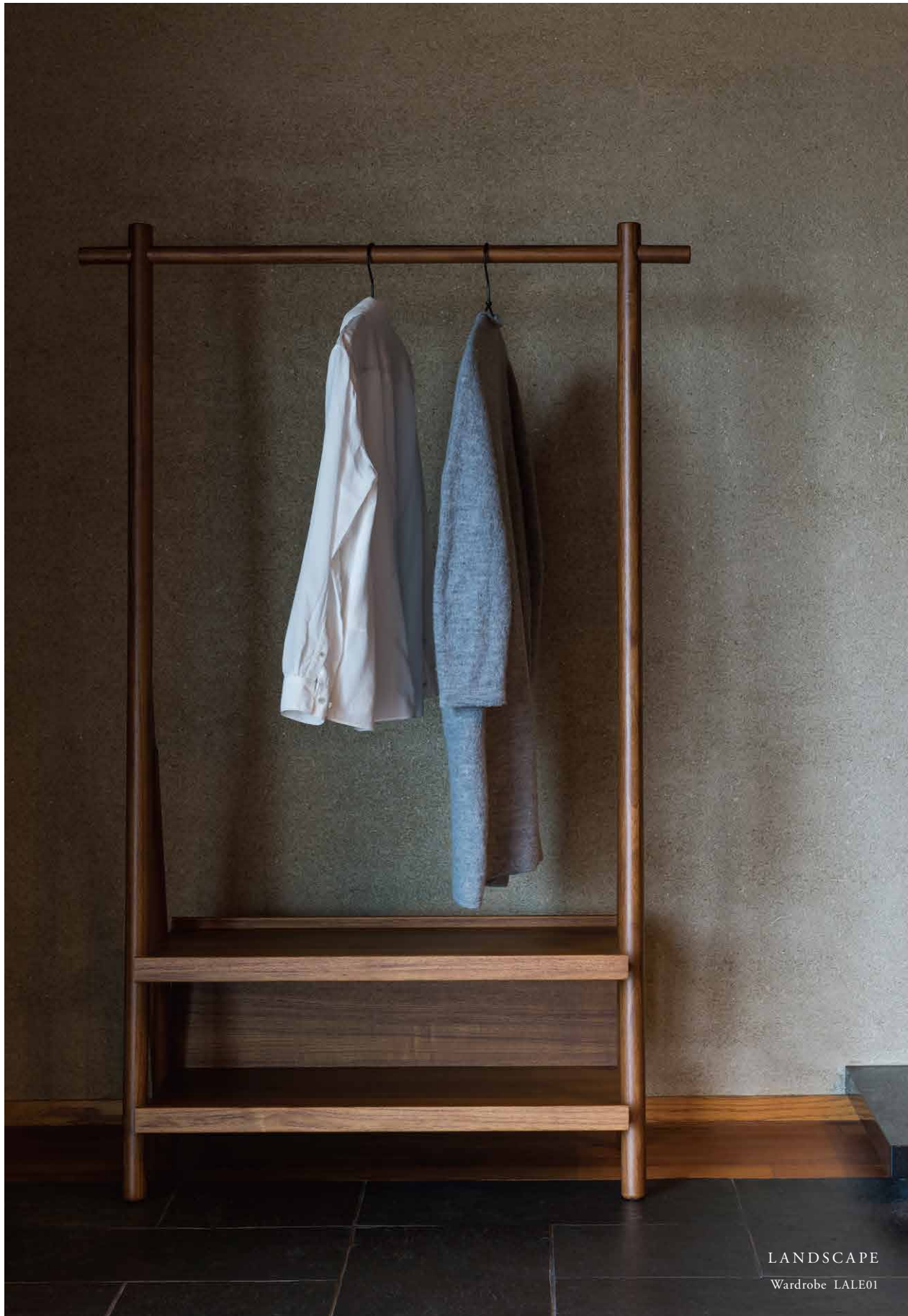
5 Tier Shelf LALE01



LANDSCAPE

Side Table LALE01





LANDSCAPE  
Wardrobe LALE01

LANDSCAPE  
Dining Table 110 LALE01  
Low Table 80 LALE01  
Low Table 60 LALE01





## LANDSCAPE

Single Bed with Nightstand LALE01



## LANDSCAPE

Sofa 1P LALE01

Low Table 80 LALE01

Sofa 2P LALE01

Ottoman & Table LALE01

5 Tier Shelf LALE01

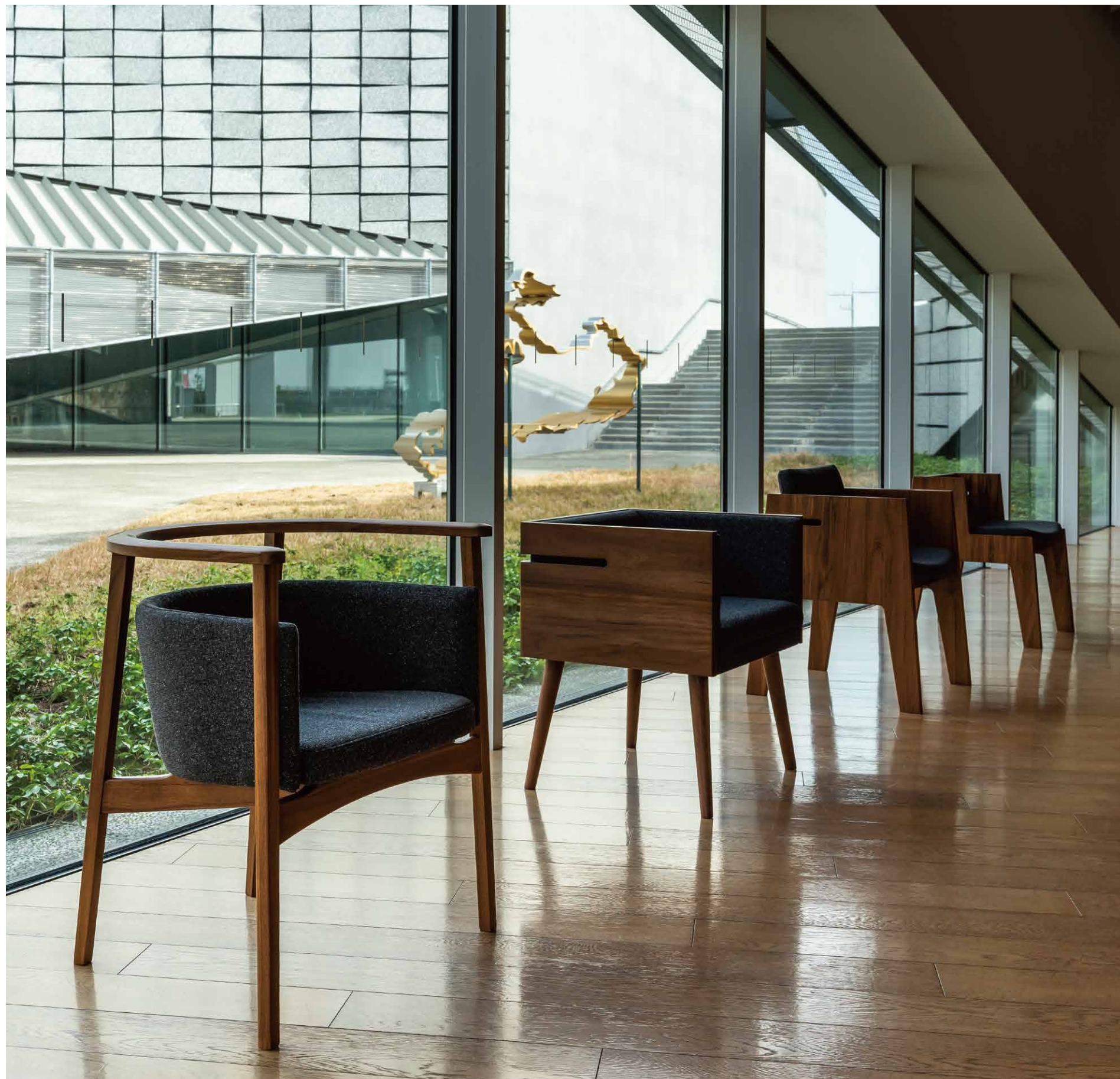




## BEHIND

あらゆる空間、あらゆる場面にさりげなく溶けこむ  
品位をもった秩序あるデザイン。  
そこに置かれた瞬間から、  
空間に、あるべき調和が生まれる家具。  
それが、BEHINDの目指した姿です。  
心にやすらぎをもたらす佇まいは、  
まるで、ずっと前からそこに在ったかのような存在感。  
奥ゆかしく、末永く、その空間に流れる時に寄り添います。

The design of our crafted furniture allows it to naturally become part of any room it belongs to. This is because our design is featured with harmonic nature and gracefulness. Our furniture shows a good harmony with its surroundings, the moment it is placed in any place. This is what our BEHIND Series aims for. The harmonic appearance of our furniture gives you a good comfort just like your old friend does. Such furniture of ours forms the comfortable, soft atmosphere for your relaxation.





BEHIND  
Chair BESN01

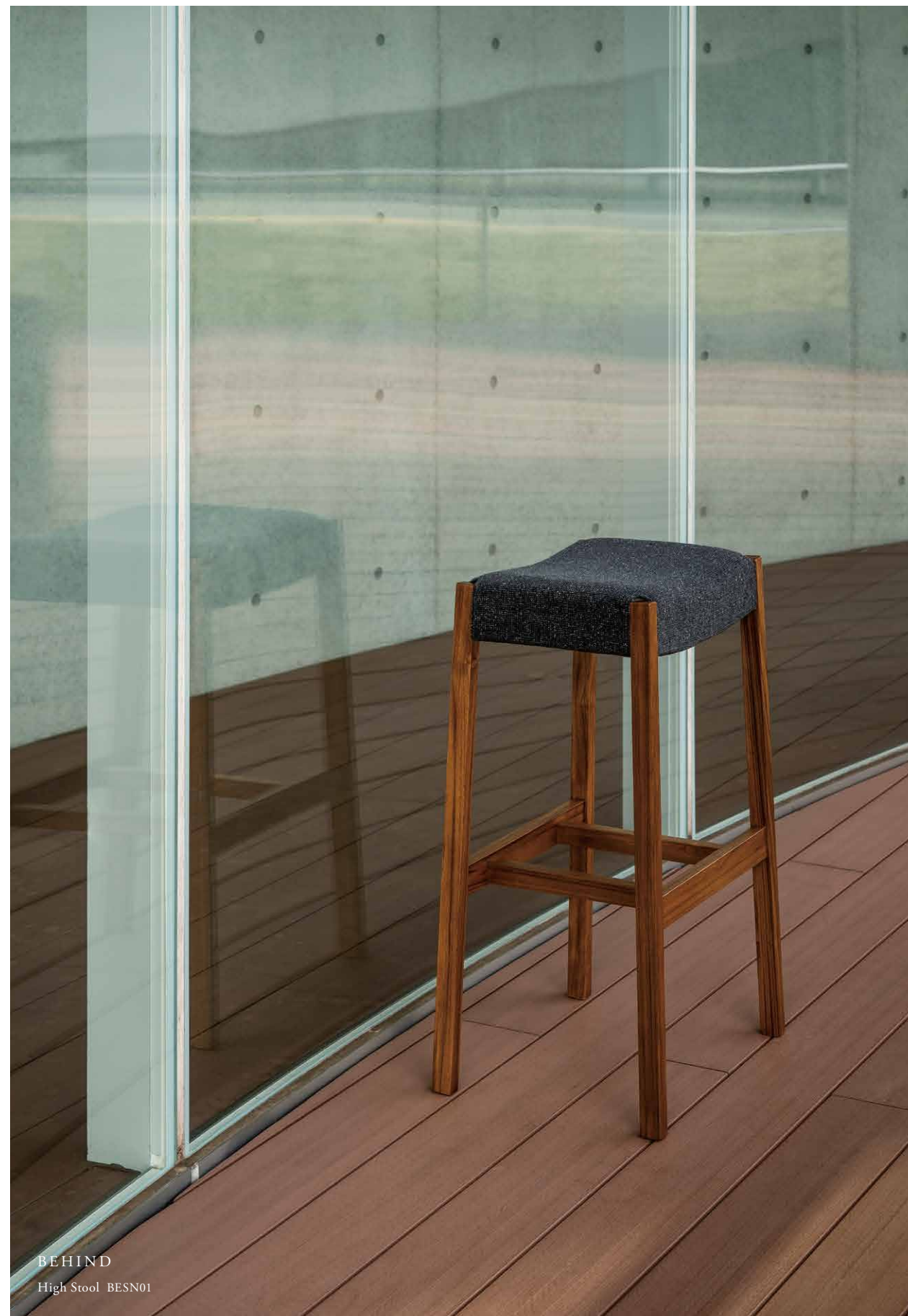


BEHIND  
High Chair BESN01  
High Table 60 BESN01  
High Stool BESN01



BEHIND

Arm Chair BEMA01



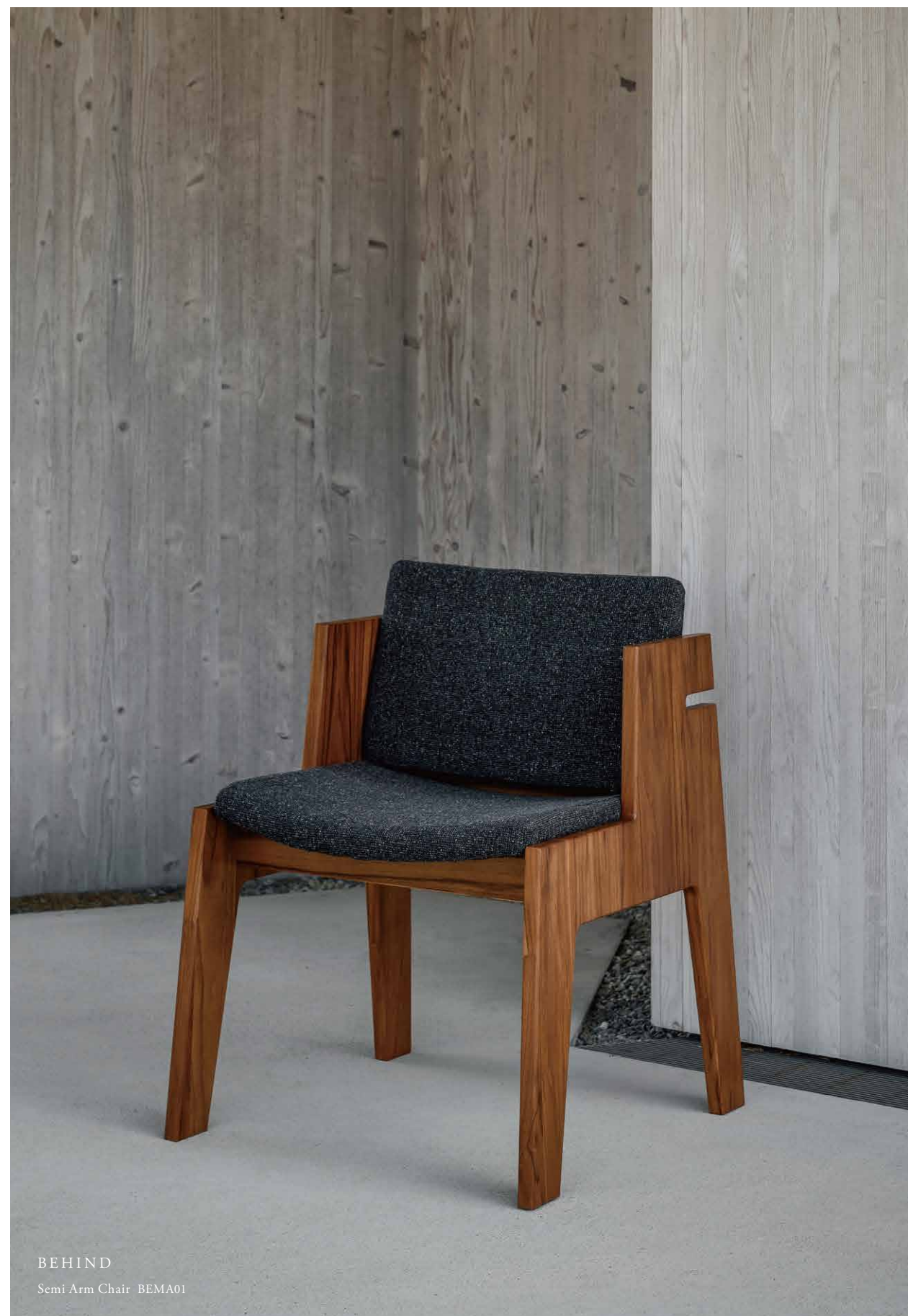
BEHIND

High Stool BESN01



BEHIND

Wardrobe BEMA01



BEHIND

Semi Arm Chair BEMA01



## LIFETIME

家具づくりの喜びを享受する者として、  
私たちは、まず何よりも「木」という素材の尊さを知っています。  
一本一本の樹木に歴史があり、  
自然とともに育んできた、世界にひとつの美しさがある。  
LIFETIME がお届けするのは、その原木の個性に敬意を払い、  
慈しみながら削りだした一枚板との出会いです。  
木目に刻まれた月日に、これからの日々が重ねられてゆく感慨。  
時を経るほどに、かけがえない縁を感じていただけることでしょう。

As the craftsmasters who deeply know the pleasure of making furniture from lumbers, we deeply know how admirable natural trees and lumbers are! Every tree has its own growth history, showing its world's best beauty carefully refined in the nature. LIFETIME is based on our deep admire toward natural trees in the world. Plus, LIFETIME is pleased to provide you with a precious opportunity to encounter a sheet of wooden plate which we lovefully lumber from a tree, appreciating its wonderful uniqueness. The wooden grain on such plate, which shows how many years the tree has spent growing enough, will be further refined with lots of days from now on and show its best taste. Through our LIFETIME furniture, you will surely feel a precious bond with nature as the time goes by.





THE AURA



Sofa 1P THSN01  
W800×D830×H790×SH440  
Teak, Urethane finish

Sofa 2.5P THSN01  
W1730×D830×H790×SH440  
Teak, Urethane finish

Sofa 3P THSN01  
W2040×D830×H790×SH400  
Teak, Urethane finish



Shelf 90 THMA01  
W884×D325×H1400  
Teak, Urethane finish



TV Stand 150 THMA01  
W1500×D439×H409  
Teak, Urethane finish

TV Stand 180 THMA01  
W1800×D439×H409  
Teak, Urethane finish



Sofa 3P THSN02  
W1880×D860×H770×SH430  
Teak, Urethane finish  
Steel, Powder coating finish



Ottoman THSN02  
W710×D710×H430  
Teak, Urethane finish  
Steel, Powder coating finish



Side Board 120 THMA01  
W1184×D439×H854  
Teak, Urethane finish



Chest 90 THMA01  
W884×D439×H854  
Teak, Urethane finish



Coffee Table 120 THMA01  
W1180×D600×H375  
Teak, Urethane finish



Side Table THSN01  
W590×D280×H500  
Teak, Urethane finish



Slim Chest 45 THMA01  
W444×D439×H1025  
Teak, Urethane finish



Backless Bench 120 THSN01  
W1150×D400×H450  
Teak, Urethane finish



## THE AURA

## LANDSCAPE



Arm Chair THSN01  
W590×D550×H820×SH450  
Teak, Urethane finish



Chair THSN01  
W525×D550×H820×SH450  
Teak, Urethane finish



Sofa 1P LALE01  
W700×D753×H600×SH350  
Teak, Urethane finish



Sofa 2P LALE01  
W1400×D753×H600×SH350  
Teak, Urethane finish



Ottoman & Table LALE01  
W700×D700×H350(H270)  
Teak, Urethane finish



Table 150 THSN01  
W1500×D800×H720  
Teak, Urethane finish



Table 180 THSN01  
W1800×D800×H720  
Teak, Urethane finish



Chaise longue LALE01  
W700×D1453×H600×SH350  
Teak, Urethane finish



Low Table 60 LALE01  
W600×D600×H300  
Teak, Urethane finish



Low Table 80 LALE01  
W800×D800×H350  
Teak, Urethane finish



Desk 90 THMA01  
W884×D439×H720  
Teak, Urethane finish



Desk Cabinet 45 THMA01  
W444×D439×H720  
Teak, Urethane finish



Shoe Cabinet 90 THMA01  
W884×D439×H1025  
Teak, Urethane finish



Lounge Chair LALE01  
W640×D654×H697×SH366  
Teak, Urethane finish



Ottoman LALE01  
W640×D420×H405×SH366  
Teak, Urethane finish



Side Table LALE01  
W470×D455×H660/450  
Teak, Urethane finish





2 Tier Shelf LALE01  
W1200×D390×H410  
Teak, Urethane finish



3 Tier Shelf LALE01  
W1200×D390×H790  
Teak, Urethane finish



5 Tier Shelf LALE01  
W1200×D390×H1410  
Teak, Urethane finish



Chair LALE01  
W450×D515×H800×SH430  
Teak, Urethane finish



Chair with Cushion LALE02  
W450×D515×H800×SH430  
Teak, Urethane finish



Dining Table 110 LALE01  
W1100×D1100×H720  
Teak, Urethane finish



Low Board 150 LALE01  
W1500×D390×H410  
Teak, Urethane finish



Side Board 150 LALE01  
W1500×D390×H610  
Teak, Urethane finish



Side Board 80 LALE01  
W800×D460×H850  
Teak, Urethane finish



Dining Table 150 LALE01  
W1500×D800×720  
Teak, Urethane finish



Desk 90 LALE01  
W900×D430×H850  
Teak, Urethane finish



Wardrobe LALE01  
W1000×D420×H1582  
Teak, Urethane finish



Glass Side Board 80 LALE01  
W800×D460×H850  
Teak, Urethane finish



Backless Bench 115 LALE01  
W1150×D490×H450  
Teak, Urethane finish



Bench 180 LALE01  
W1800×D557×H780×SH450  
Teak, Urethane finish



Chest 80 LALE01  
W800×D460×H850  
Teak, Urethane finish



Single Bed with Nightstand LALE01  
W1330×L1990×H700  
Teak, Urethane finish



BEHIND



Arm Chair BESN01  
W630×D590×H750×SH450  
Teak, Urethane finish



Chair BESN01  
W475×D550×H820×SH450  
Teak, Urethane finish



Wardrobe BEMA01  
W1182×D435×H1820×SH460  
Teak, Urethane finish



High Chair BESN01  
W460×D490×H950×SH720  
Teak, Urethane finish



High Stool BESN01  
W460×D360×H720  
Teak, Urethane finish



High Table 60 BESN01  
W600×D600×H1000  
Teak, Urethane finish



Box Chair BELE01  
W590×D530×H680×SH450  
Teak, Urethane finish



Arm Chair BEMA01  
W589×D623×H760×SH450  
Teak, Urethane finish



Semi Arm Chair BEMA01  
W589×D623×H760×SH450  
Teak, Urethane finish

LIFETIME



一枚板の天板は様々な材質やサイズがありますので、詳しくはお問い合わせください。  
As for the top plate of our creative furniture, please call or email us about its size and materials.  
The top plate varies in size and materials.



Dining Table Legs LFLE01  
W700×D260×H690  
Teak, Urethane finish



Dining Table Legs LFSN01  
W700×D150×H690  
Teak, Urethane finish



Dining Table Legs LFSN02  
W700×D345×H690  
Teak, Urethane finish



Dining Table Legs LFLE02  
W660×D300×H650  
Teak, Urethane finish  
Steel, Powder coating finish



Counter Table Legs LFLE02  
W310×D300×H650  
Teak, Urethane finish  
Steel, Powder coating finish



Bench Legs LFLE02  
W400×D220×H400  
Teak, Urethane finish  
Steel, Powder coating finish

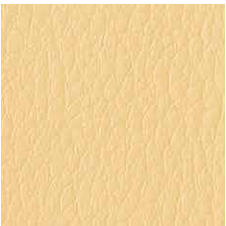


LEATHER & FABRIC

A rank



Red CS



Yellow CS



Beige CS



Brown CS



Navy CS



Black CS

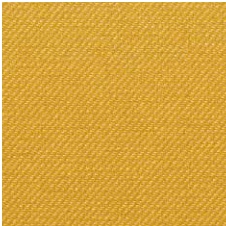
B rank



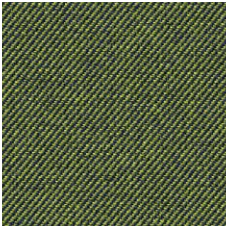
Red TM



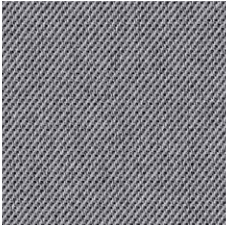
Orange TM



Lemon Yellow TM



Dark Green TM



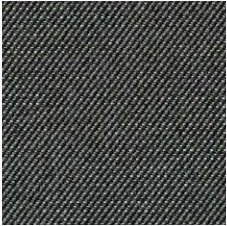
Gray TM



Peacock TM



Night Blue TM



Black TM

C rank



Ivory HM



Green HM

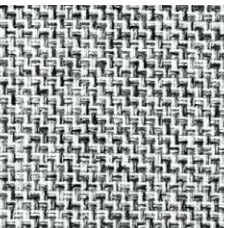


Gray HM

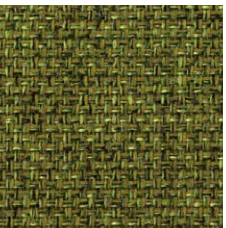


Charcoal Gray HM

D rank



White BM



Yellow Green BM



Navy BM

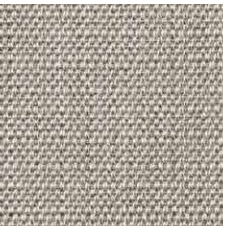


Charcoal Gray BM

E rank



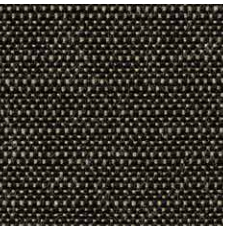
Ivory NS



Light Gray NS



Gray NS



Charcoal Gray NS



## DESIGNERS



下田 隆  
Takashi Shimoda

1961年福岡県生まれ。1985年九州産業大学芸術学部デザイン科インテリアコース卒業後、インテリアメーカー企画室にて製品デザインに従事。1993年シモダデザインルーム設立。各地の家具メーカーと多くの製品を製作。家具デザインを中心に福岡を拠点に活動。

Born in Fukuoka in 1961. After finishing Interior Course, Faculty of Art & Design, Kyushu Sangyo University in 1985, Mr. Shimoda worked as a furniture designer at the planning office of an interior maker for some years before establishing Shimoda Design Room in 1993. Since then, by jointly working with furniture makers in various cities and towns, he has manufactured a lot of products. Based in Fukuoka, Mr. Shimoda has been working actively as a top furniture designer.



久保 哲也  
Tetsuya Kubo

1979年長崎県生まれ。2002年九州産業大学芸術学部デザイン学科卒業後、家具・店舗什器メーカーに勤務。建築金物、店舗什器・備品などのプロダクトデザインからショールーム、カタログ、WEBなど幅広いデザイン業務に従事。2015年クボデザインスタジオ設立。

Born in Nagasaki in 1979. After finishing Design Course, Faculty of Art & Design, Kyushu Sangyo University in 2002, Mr. Kubo worked for a furniture & shop equipment maker. Mr. Kubo worked on the product-designing of building hardware, shop equipment/fixtures and also he was engaged in a wide range of soft designing of showrooms, product brochures and websites before establishing Kubo Design Studio in 2015.

掲載商品のデザイン・仕様については、品質改良のため、予告なく変更する場合があります。  
木材、ファブリックなどの天然素材を使用している製品については、  
木目や色調、柄や質感などが、実物とは若干異なる場合があります。

### プロジェクト参加企業

株式会社園田産業／丸田木工株式会社／レグナテック株式会社／  
有限会社高田製材所／株式会社佐藤木材／株式会社グラーツ・ランバー

### お問い合わせ

CLANTREE プロジェクトチーム（レグナテック 株式会社内）  
〒840-2106 佐賀県佐賀市諸富町山領266-1  
Tel.0952-47-6111 Fax.0952-47-6113  
info@clantree.net

### Participating Companies :

SONODA INDUSTRY Co. Ltd. / MARUTA WOOD WORK Co. Ltd. /  
LEGNATEC Co. Ltd. / TAKADA LUMBER Co. Ltd. /  
SATO LUMBER Co. Ltd. / GRAZ LUMBER Co. Ltd.

### Contact :

CLANTREE Project Team (in LEGNATEC Co. Ltd.)  
266-1 yamaryo, Morodomi-cho, Saga City, Saga 840-2106 JAPAN  
Tel. +81-952-47-6111 Fax. +81-952-47-6113  
info@clantree.net

### Special Thanks :

Saga Prefectural Art Museum / ZAG.Institute / Kyshu Geibunkan  
Art Director / Designer : Michio Nishi \_ Shiro  
Photographer : Tsuncharu Doi \_ Creo Photo Studio  
Copywriter : Mutsumi Tobinaga  
©CLANTREE All Rights Reserved.

www.clantree.net



